

dpd

**DPD Poland**

**Pickup points map**

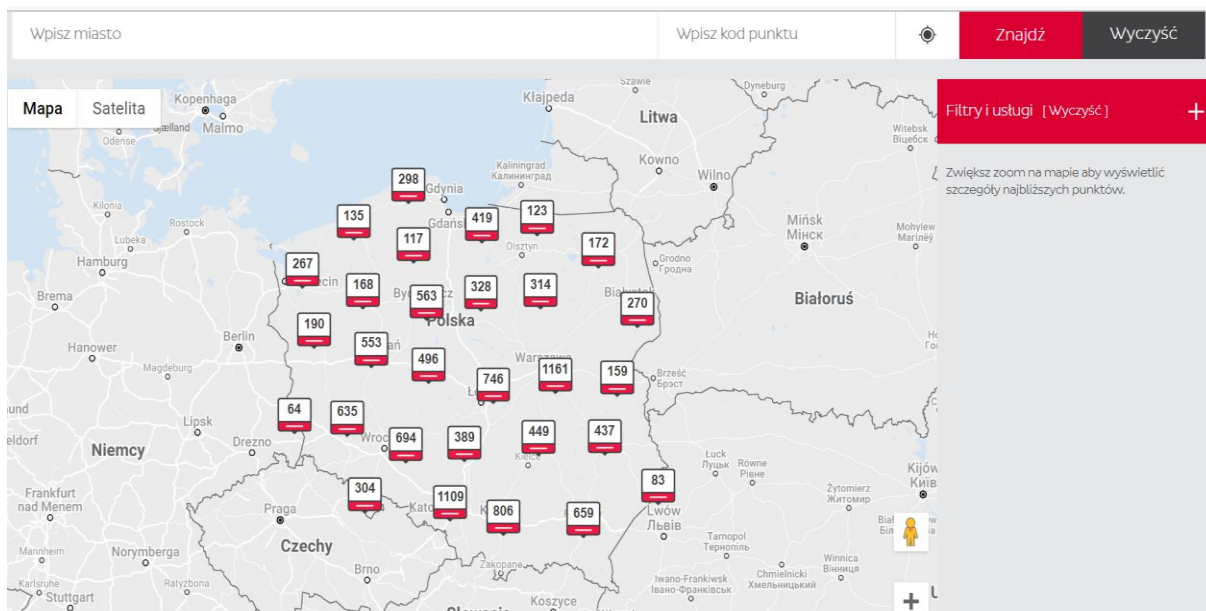
Ver 1.0  
2023-01-16

## Table of Contents

Map functionality .....	3
1. General view .....	3
2. Available filters and services. ....	3
3. Point details and selection .....	4
Implementation notes and recommendations .....	5
Embedding a map with Pickup points on a website .....	6
1. An example of an embed code.....	6
2. Examples of calls for different countries.....	8
3. Examples of using filters.....	8

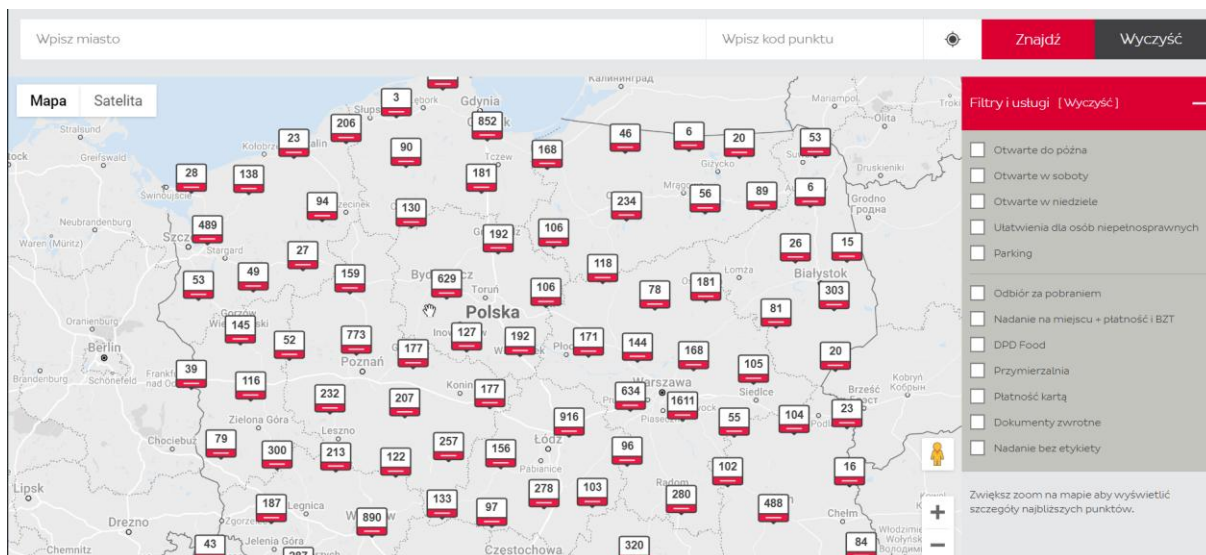
## Map functionality

### 1. General view



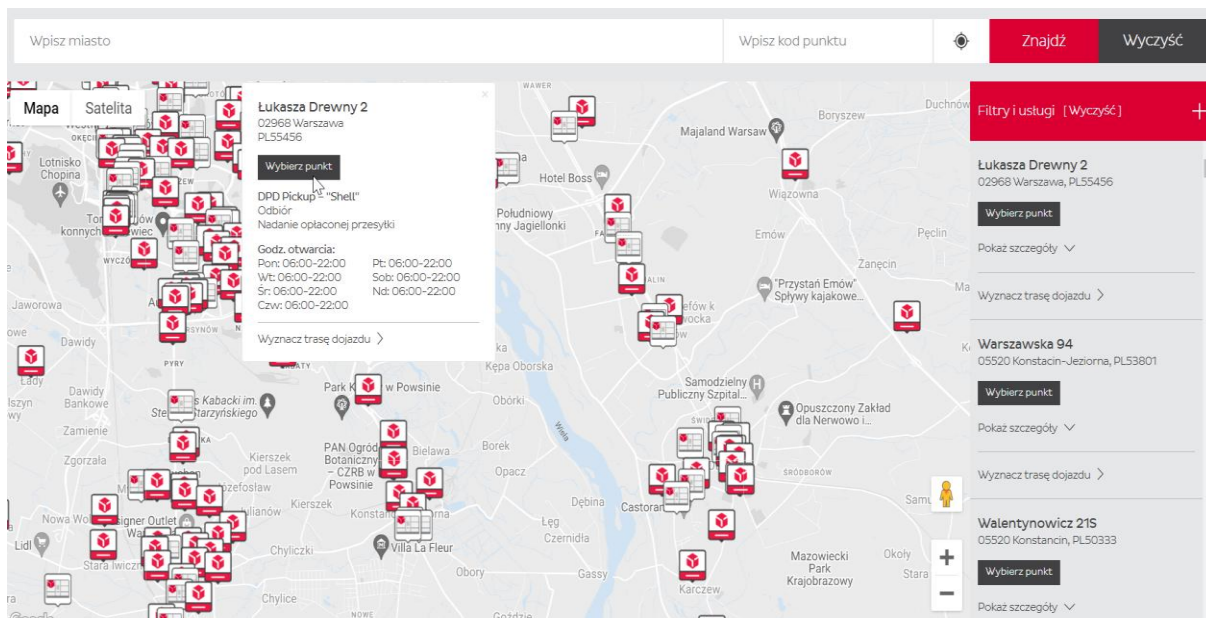
### 2. Available filters and services.

Adding more filters (right panel) narrows the range of displayed points. Examples of implementing filters can be found later in the document.



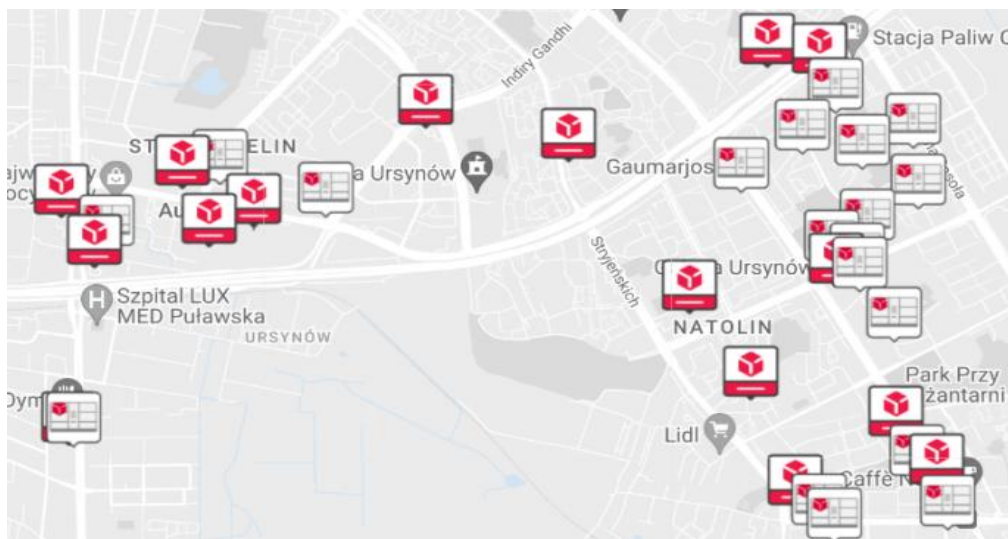
### 3. Point details and selection

When zoomed in enough, clicking on the point icon displays details while allowing you to select a point. The right panel displays data for points adjacent to the selected one. Each of these points can be selected.



## Implementation notes and recommendations

1. Only points active or on holiday are displayed on the map.
2. DPD Poland provides its customers with both stationary points and parcel machines (lockers).
3. The icon of the Pickup point icon is different from the locker icon, which is similar to a parcel machine. These differences are shown in the picture below.



4. Clicking the "Select a point" button results in transferring only the Pickup point code (e.g. PL55456) to the application that supports the store. Other information, i.e. opening hours, address, available services, etc. can be obtained using the web service for finding Pickup Points (DPD-PICKUP-Services).
5. Shipments to parcel machines (codes starting with PL8\* / PL9\*) are limited to single-parcel shipments.
6. DPD Polska does not support COD deliveries to foreign PICKUP points.

## Embedding a map with Pickup points on a website

- A. DPD Polska provides the programming code enabling the presentation of the map of Pickup points.
- B. The map authentication key is provided to customers individually. To obtain a key, please send a request containing the name of the domain in which it will be used to the address [itcustomer@dpd.com.pl](mailto:itcustomer@dpd.com.pl).

### 1. An example of an embed code

```
<body>
<script id="dpd-widget" type="text/javascript">
  // ### The following function is called when the user selects a point. ###
  // ### You must implement the following function yourself. ###
  // ### Business logic should be adapted to your own site. ###
  function pointSelected(pointID){
  // ### For example, pass pointID as an input value or call an AJAX query. ###
    console.log('Point selected: '+pointID)
  }
</script>
<!--this is an example for Poland-->
<script type="text/javascript" src="//pudofinder.dpd.com.pl/source/dpd_widget.js?key= ***KEY***"
"></script>
</body>
```

Parameter pointID is being passed by the following widget's method:

```
eventListener(messageEvent, function(a) {
  if(a.data.height && !isNaN(a.data.height)){
    iframe.style.height = a.data.height + "px"
  }else if( a.data.point_id){
    pointSelected(a.data.point_id);
  }
}, !1);
```

The Pickup DPD Polska map allows you to present points in the following countries

– Austria	AT
– Belgium	BE
– Croatia	HR
– Czech Republic	CZ
– Denmark	DK
– Estonia	EE
– Finland	FI
– France	FR
– Spain	ES
– Netherlands	NL
– Lithuania	LT
– Latvia	LV
– Germany	DE
– Portugal	PT
– Slovakia	SK
– Sweden	SE

- Hungary HU
- Italy IT

In case of problems with geolocation, the map should be placed in an iframe with the allow="geolocation" option.

## 2. Examples of calls for different countries

**<!-- example for Poland displaying only points with COD service -->**  
**<script type="text/javascript" src="//pudofinder.dpd.com.pl/source/dpd\_widget.js?key= \*\*\*KEY\*\*\***  
**&direct\_delivery\_cod=1"></script>**

**<!-- example for Sweden-->**  
**<script type="text/javascript" src="//pudofinder.dpd.com.pl/source/dpd\_widget.js?key= \*\*\*KEY\*\*\***  
**&query=SE"></script>**

**<!-- example for Germany-->**  
**<script type="text/javascript" src="//pudofinder.dpd.com.pl/source/dpd\_widget.js?key= \*\*\*KEY\*\*\***  
**&query=DE"></script>**

**<!-- example for France-->**  
**<script type="text/javascript" src="//pudofinder.dpd.com.pl/source/dpd\_widget.js?key= \*\*\*KEY\*\*\***  
**&query=FR"></script>**

## 3. Examples of using filters

### **Open late:**

**//pudofinder.dpd.com.pl/ source/dpd\_widget.js?key= \*\*\*KEY\*\*\*?lang=pl&open\_late=1&country=PL**

### **Open on Saturdays:**

**...&open\_saturdays=1&country=PL**

### **Open Sundays:**

**...&open\_sundays=1&country=PL**

### **Facilitations for people with disabilities:**

**...&disabled\_friendly=1&country=PL**

### **Parking:**

**...&parking=1&country=PL**

### **Reception:**

**...&direct\_delivery=1&country=PL**

### **Cash on delivery:**

**...&direct\_delivery\_cod=1&country=PL**

### **Sending a paid shipment:**

**...&dropoff\_online=1&country=PL**

### **On-site drop-off + payment and BZT:**

**...&dropoff\_offline=1&country=PL**

### **Return shipment:**

**...&swap\_parcel=1&country=PL**



**DPD Food:**

...&d\_fresh=1&country=PL

**Fitting room:**

...&fitting\_room=1&country=PL

**Card payment:**

...&card\_payment=1&country=PL

**Return documents:**

...&rod=1&country=PL

**LQ:**

...&dpd\_lq=1&country=PL

**Ship without labels:**

...&digital\_label=1&country=PL

**Show one selected point:**

...&point=PL85701

**Parcel machines:**

...&swip\_box=1&country=PL

It is possible to hide the filters so as to display a map of only points with service or only machines and prevent the recipient from switching it.

The parameter that allows you to hide the filters is hideFilters=1 added to the call. So, for example, calls to service points/machines with filter locking look as follows:

[https://pudofinder.dpd.com.pl/?points\\_with\\_services=1&hideFilters=1](https://pudofinder.dpd.com.pl/?points_with_services=1&hideFilters=1)

[https://pudofinder.dpd.com.pl/?swip\\_box=1&hideFilters=1](https://pudofinder.dpd.com.pl/?swip_box=1&hideFilters=1)

Verification - after using hideFilters, only machines/service points are displayed, the user cannot change this/clear the filters:

**Map on the right (view on the next page):**

```
<script type="text/javascript"
src="//pudofinder.dpd.com.pl/source/dpd_widget.js?key=a9b07eb6c1b218b975529f9cea0e1364&q
uery=PL&points_with_services=1&hideFilters=1" ></script>
```

**Map on the left (view on the next page):**

```
<script type="text/javascript"
src="//pudofinder.dpd.com.pl/source/dpd_widget.js?key=a9b07eb6c1b218b975529f9cea0e1364&q
uery=PL&swip_box=1&hideFilters=1" ></script>
```

